



Jeslock Pull Tight Security Seal (APT4011)

- IBC's
- Gaming machines
- Chemical drums

- Plastic boxes
- ATM's



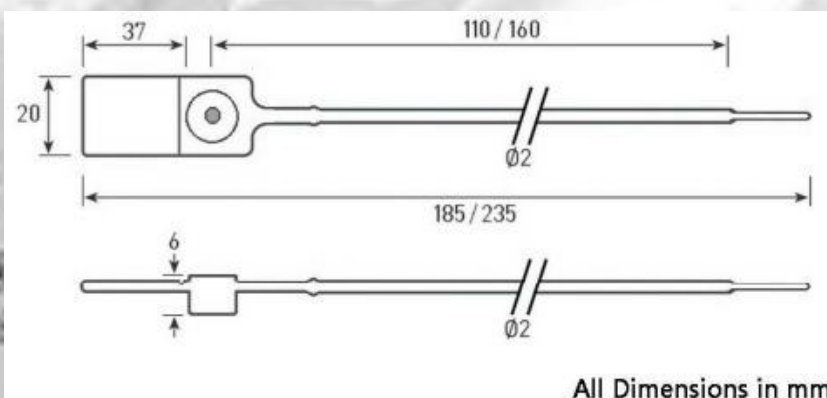
The Jeslock is a shorter tamper-evident pull tight security seal made from polypropylene with a steel locking insert for added security. The seal features a narrow 2mm strap enabling it to be used on smaller apertures .

Available in 2 sizes with multiple colour and printing options

2 Sizes Available

S-185mm total length

L-235mm total length



Customisation Options

- Laser or digital thermal printing
- Logo, Serial Numbers, Barcodes

Material	Working Temperature	Breaking Strength	Colours	Packaging
Polypropylene body	-20 / +80c	15kgf	Red, Blue, Green, Yellow and white	Mats of 10 Seals Cartons of 1,000
Stainless steel locking insert				

T:0330 133 1544
Sales@AthelynLtd.co.uk
www.AthelynLtd.co.uk